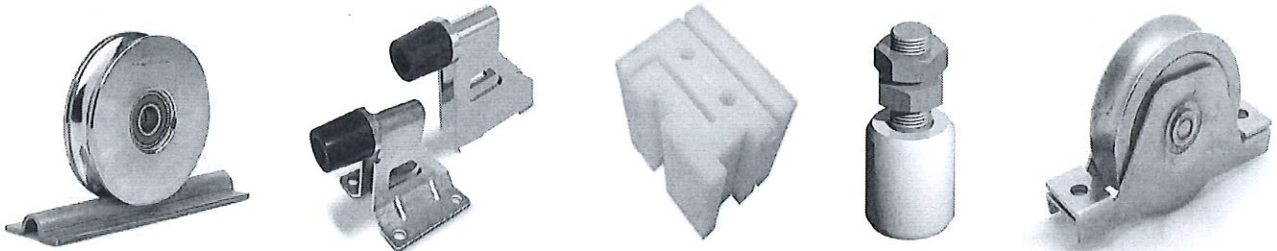




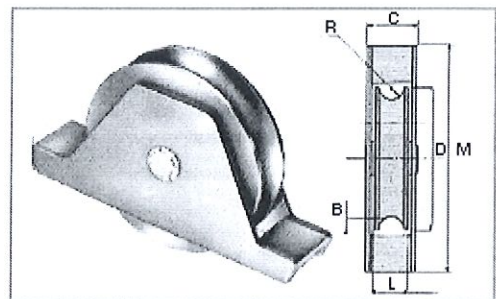
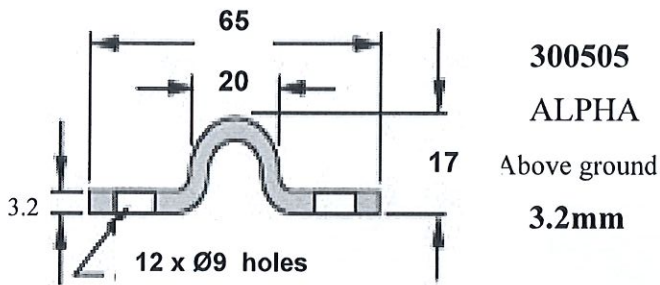
# MAGIC BUTTON

## SLIDING GATE HARDWARE



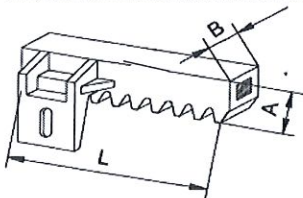
### GATE TRACK & RACK

α ALPHA \* 3 Metre modular lengths



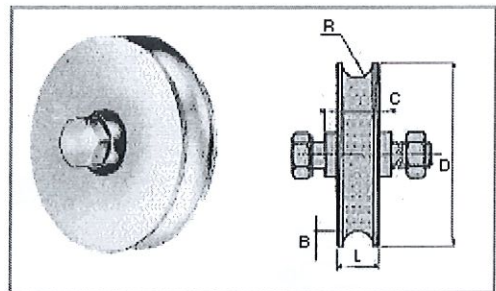
"U" Roller with Bracket

TYPE	KG	D	C	B	L	M	
300550	200	90	34	10	26	140	Ø21
300554	400	160	44	10	30	261	Ø21



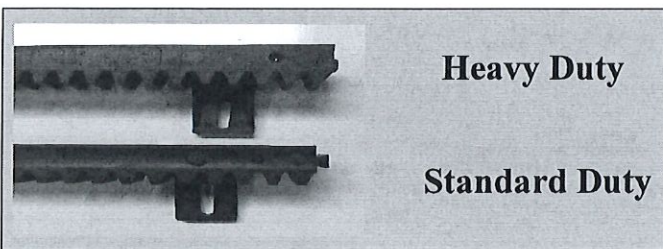
**NYLON RACK**  
with steel insert.

A = 28 B = 20 L = 1020

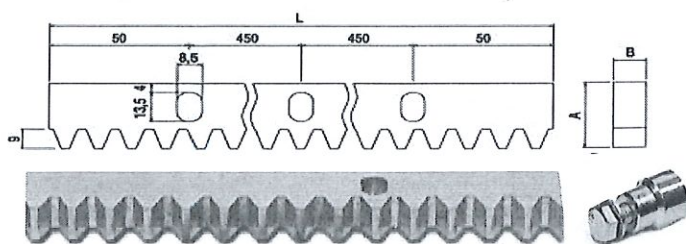


"U" Roller with Axle

TYPE	KG	D	C	B	L		
300551	330	120	34	10	26		Ø21
300555	420	160	44	10	30		Ø21
300552	550	157	44	9.5	33		Ø20
300553	600	197	44	9.5	33		Ø20



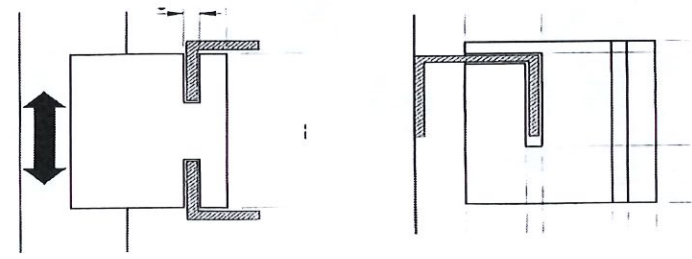
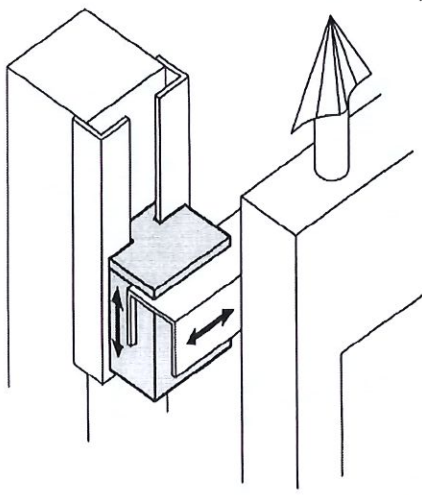
### STEEL RACK



# SLIDING GATE HARDWARE

## NYLON GUIDE BLOCK

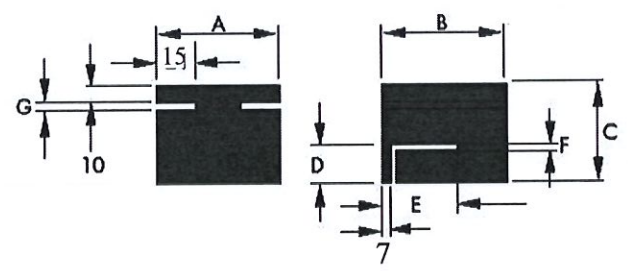
For sliding gates on an incline  
(Angles & channels not included)



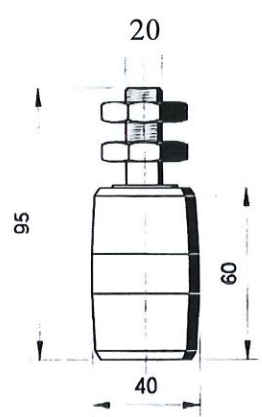
TOP VIEW

SIDE VIEW

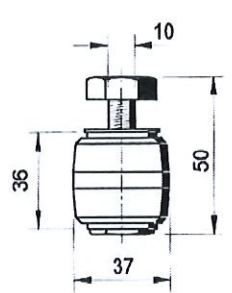
	A	B	C	D	E	F	G
(cm)	70	75	58	20	50	5	5



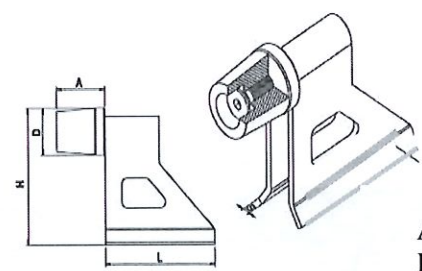
### TOP ROLLERS



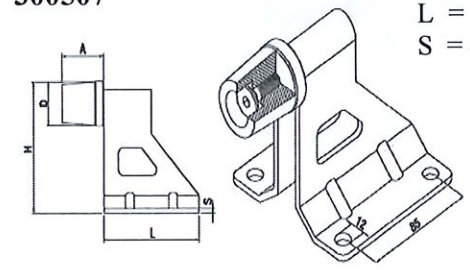
300558



300557



300507



300508

- A = 45
- D = 40
- H = 120
- L = 110
- S = 4

**LIFTMASTER ELECTRONICS PTY LTD** A.B.N. 58 000 266 035  
 PO BOX 54 ALEXANDRIA NSW 1435 AUSTRALIA PH: 61 2 9699 9654 FX: 61 2 9699 8443  
[www.liftmaster.com.au](http://www.liftmaster.com.au) [salesdesk@liftmaster.com.au](mailto:salesdesk@liftmaster.com.au)

As Liftmaster Electronics policy is one of constant improvement, we reserve the right to alter any part of these specifications without notice and without incurring any obligation.