

RELAY PHOTO ELECTRICS

BEAM TO BEAM up to 30m Outdoor (Indoor 60m)

COMMERCIAL



Item code: 500215

- ◆ Supply voltage 10VDC to 30VDC (non -polarity)
- ◆ Wide adjustment Horizontally & Vertically
- ◆ Internally pointable through 180°
- ◆ N/C and N/O output
- ◆ Insect protection & IP55 Rated
- ◆ Dimensions (mm) : 73 (W) x 170 (H) x 70 (D)

BEAM TO BEAM up to 10m Outdoor (Indoor 30m)

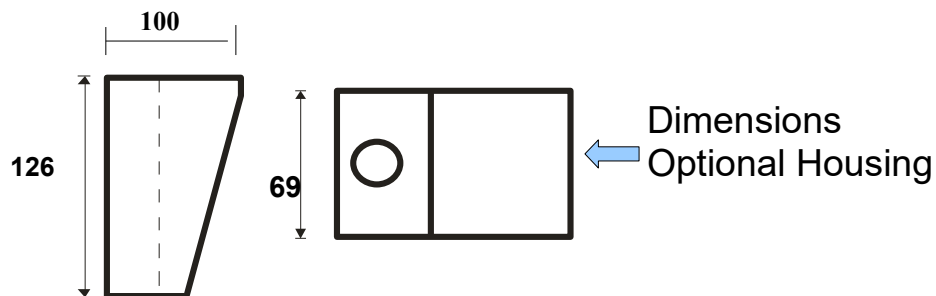
Domestic & commercial



Item code: 500222

- ◆ Supply voltage 12V – 24V AC/DC
- ◆ Operation Indicator
- ◆ N/C and N/O output
- ◆ IP66 Rated
- ◆ Dimensions (mm) : 46 (W) X 95 (H) X 34 (D)
- ◆ Available with optional aluminum housing

Optional Housing



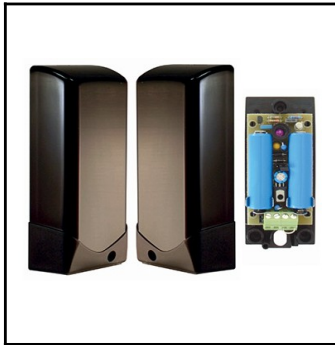
Item code: 500226



MAGIC BUTTON

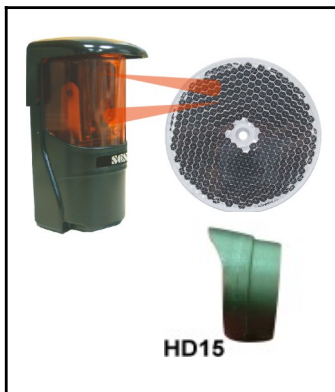
PHOTO ELECTRICS

BATTERY up to 8m Outdoor (Indoor 20m)



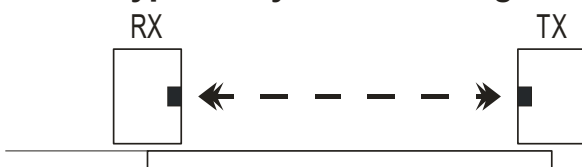
- Item code: 080PE08*
- ◆ Supply voltage RX: AC/DC 12 – 24V
 - ◆ Supply voltage TX: 2 x 3.6V Lithium Batteries
 - ◆ IP 45 rated
 - ◆ Operating Temp: -25° to 55° C
 - ◆ Depleted battery indicator
 - ◆ Alignment test point
 - ◆ Dimensions (mm): 50 (W) x 110 (H) x 25 (D)
 - ◆ Available with optional aluminum housing

REFLECTOR up to 10m outdoor / indoor



- Item code: 080PE10*
- ◆ Supply voltage AC/DC 12 – 250V
 - ◆ Polarized Sensor
 - ◆ IP 66 rated
 - ◆ Operating Temp: -25° to 60° C
 - ◆ Reflector (mm) : 82.1mm
 - ◆ Dimensions (mm): 61 (W) x 122 (H) x 62 (D)
 - ◆ Supplied with reflector hood

Typical Layout for Sliding Gates



Typical Layout for Swing Gates

